

REVROY UNDER VEHICLE SURVEILLANCE SOLUTION- MODEL RR-UVSS-TW



The **REVROY** Brand of **Under Vehicle Scanning System (UVSS)** is the congruence of an advanced Camera located in an IP67 grade enclosure along with bright LED lamps for additional lighting, a PC and Software Ware to convert the information from the scanned images and deliver valuable information to enhance the security for a said premises.

The Advanced line Scan Camera (typically used to scan objects that are in movement) deliver in a fraction of time the complete undercarriage of a vehicle that passes over the UVSS Cameras (firmly buried in the ground at a location) a clear high-resolution image for review and decision making.

A UVSS system is in popular demand at sites that require a high degree of security. While the need will be to Mitigate Unauthorised, forced entry under any circumstance it is even more vital to ensure only vehicles that are safe enter and thoroughly checked to exit. Defense/Armament Depots/Govt./Prisons/R&D/Data-Centre/Banks/Hotels and such other facilities in today's scenario demand the deployment of the UVSS system.

Considering, the use of reflective mirrors is a cumbersome method and extremely rudimentary in today's scenario. It is here that the UVSS has gained in popularity for its



quick analysis of the under belly of a vehicle and deliver authenticated, recorded, & evaluated information that is valuable for the security & utilized for quickly processing of vehicles from and out of a facility.

The S/W of the system aids in quickly identifying areas of inconsistency by presenting them in a highlighted manner for quick review and decision-making purpose.

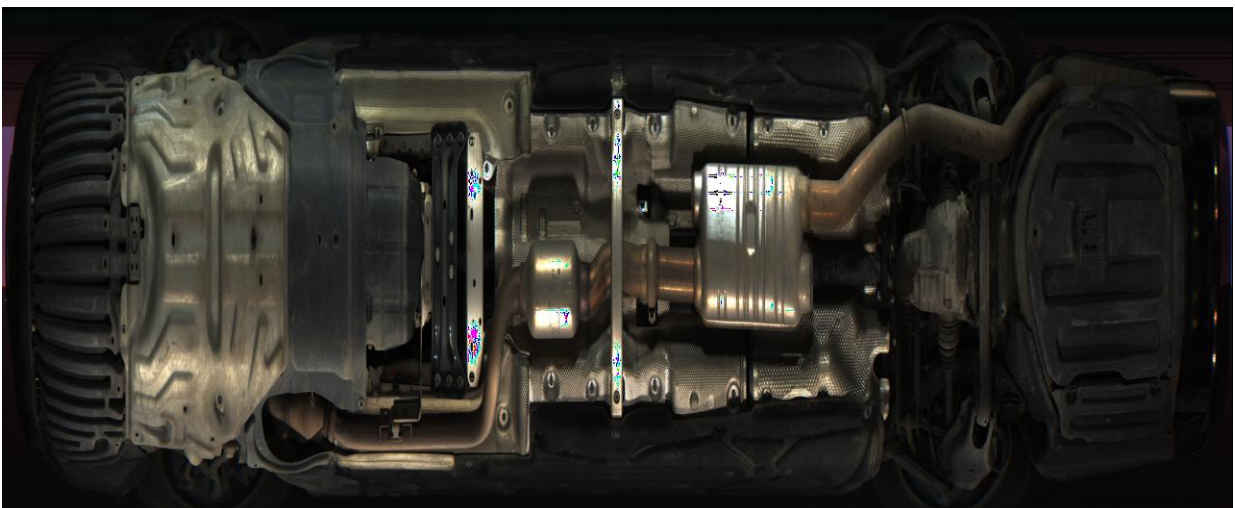
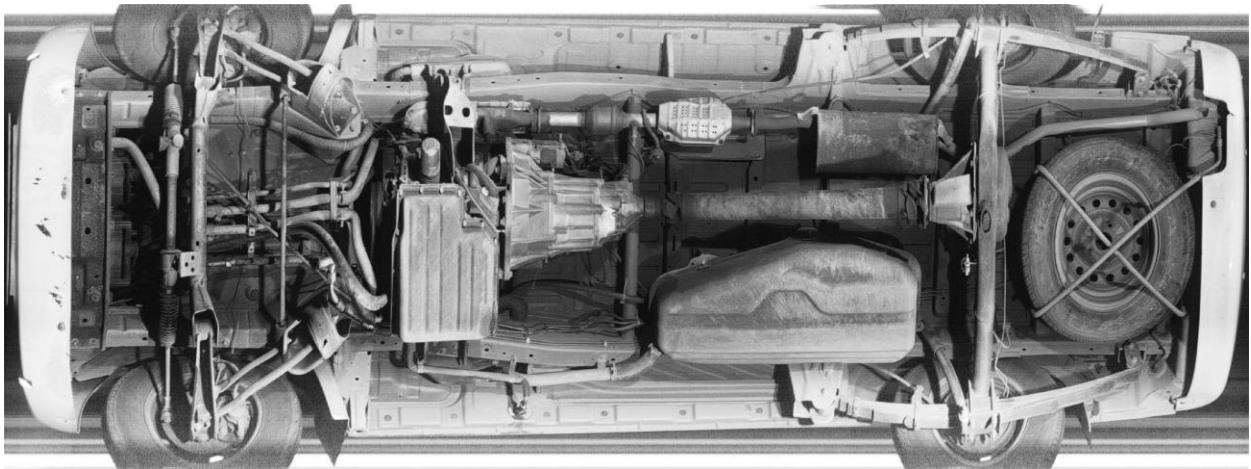
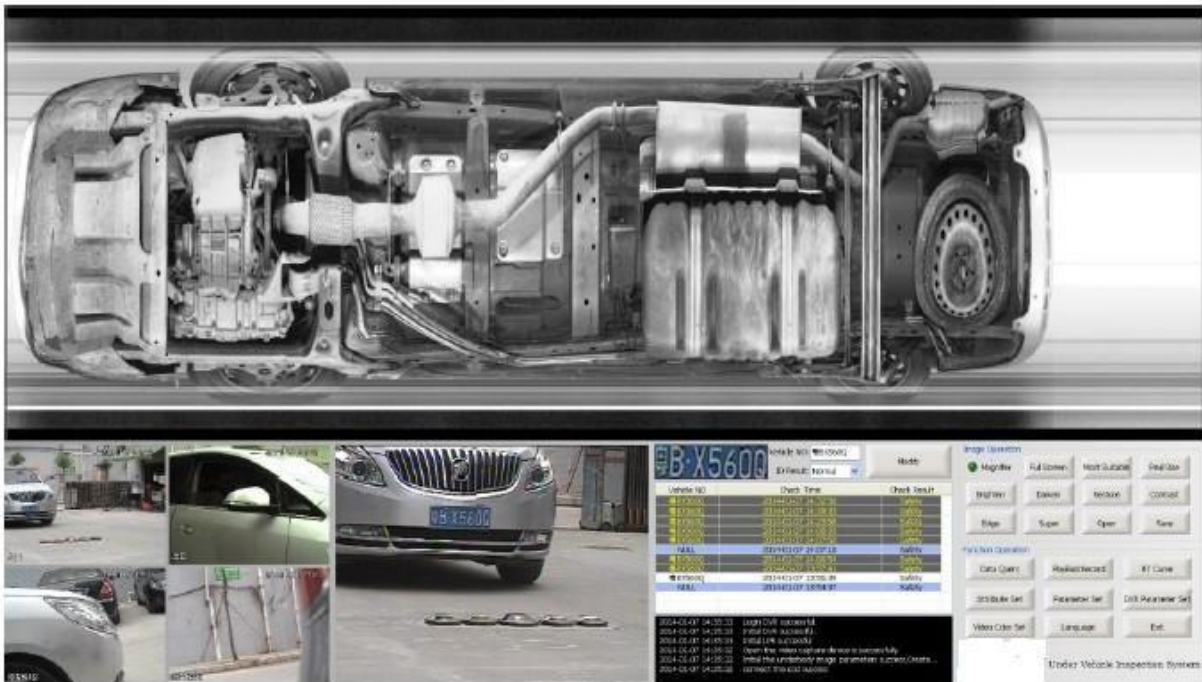
The speed of decision making in such installations is of paramount importance considering the value of people and property that must be protected at a given site.



- 1. Operation Floor**
- 2. Digital Video Recorder Position**
- 3. 22 Inch Display**
- 4. CPU**
- 5. Power Switch**



REVROY-UVSS SOFTWARE INTERFACE



FEATURES:

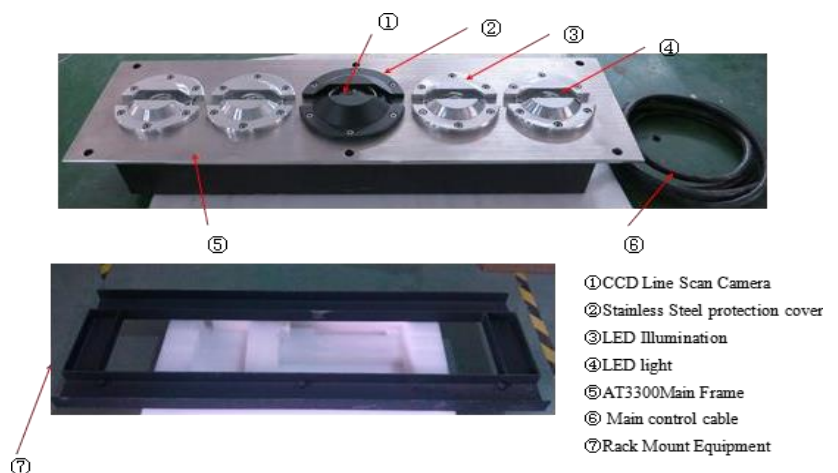
- ⚙ Auto digital line scan, high-resolution undercarriage imaging.
- ⚙ Decision Response Time: 2-3 seconds
- ⚙ Applicable to variety of vehicles, wide vision :
- ⚙ Test will be completed during the vehicle manoeuvres without stopping, adapted to different speeds.
- ⚙ Undercarriage image can be stored, retrieved, searched or compared with other images.
- ⚙ Whole image display on monitor with features for Zoom, Playback, Sign in the images, Stretching, Cutting etc
- ⚙ Multi entrance management model, and statistics of entering and exiting vehicles.
- ⚙ Flexible detection process may be adopted on site to satisfy the demands of a given facility.
- ⚙ Image monitoring, video recording for different scenario

ADVANTAGE OF UVSS:

- ⚙ Scanning Process is achieved while Vehicle is in movement below 30Km/Hr. The Vehicle does not have to be stopped for the said purpose
- ⚙ Time of image display after scan <1s
- ⚙ "Automatic Image save" and "Auto-Delete" feature when hard disk is full
- ⚙ Time of image saving or loading:<1s

EMBEDDED FRAME :

- ⚙ Material: stainless steel
- ⚙ Dimension: 1200mm x 350mm
- ⚙ Water-proof grade: IP68
- ⚙ Load bearing Weight: 50T
- ⚙ Image resolution: 12000x7500



CCD LINE SCAN CAMERA :

- ⚙ Type: color image
- ⚙ Resolution: 5000 * 2048 pixels,
- ⚙ Image : color
- ⚙ Power Supply: 24VDC, 3A
- ⚙ Transfer interface/distance : Gigabit Ethernet/100m
- ⚙ Sealed unit to protect against heat, dust, water and vibration
- ⚙ Operating Temperature Range: -25 °C to +60 °C

LED ILLUMINATION:

- ⚙ Power Supply: 24VDC, 320W
- ⚙ LED light service life: 50,000 hours
- ⚙ Operating Temperature Range: -25 °C to +60 °C



VEHICLE PLATE NUMBER CAPTURE CAMERA :

- The imaging element, 1/2.8" CMOS
- Lens: Variable lens, manual focus, 2.8-12mm
- Frame rate : 1-25fps, default 25fps
- Time of exposure: 0-1ms or customize
- Internet: RS485



DISTRIBUTION BOX :

- Input: 2 channels induction coil
- Output: 1 Channel switch type 12VDC
- Communication port: RS485, 1000M Ethernet (Optional)
- Operating Temperature: -25°C to 60°C

COMPUTER :

- Brand: Grantech (SYM76941 VGGA)
- CPU: Intel (R) Core Processor, 2.6GHz/2.59GHz
- Memory: 2G (optional 4G)
- Graphics :512M
- Hard Disk: SATA2 Hard Disk 500G
- Dual LAN (at least one Intel Gigabit)
- USB2.0 (Up to 2 pieces)
- Monitor: 24'' LCD, resolution up to 1920*1080
- Scene Video Record: 4 channels, Compression algorithm of scene video: H264
- Operational system: Windows XP or Windows 7 (32 bit) (optional)

OPTIONAL :

- ALPR-Automatic License Plate Recognition software : via IP Camera captures license plate, ALPR software processing and automatically presents license plate on screen



CONFIGURATION LIST

| No. | Device Name | Unit | Quantity | Note (Main Device) |
|-----|---|------|----------|---|
| 1 | Vehicle Chassis Scanning System Software Part | set | 1 | Image Analysis Management Software |
| 2 | Car Scanning System Image Acquisition Part | set | 1 | Vehicle Chassis Image Equipment |
| | Car Scanning System Operation Floor | | | |
| 3 | Under-body IO Distribution Box | set | 1 | Distribution Box & Induction Coil 10m (one way) |
| | Power Control and Vehicle Detector | | | |
| | System Cabinet | | | |
| | System Host | set | 1 | System Host, Operation Floor |
| 4 | LCD | | | |
| | Outboard LCD Display (Optional) | pc | 1 | 50 Inch LCD TV |
| | | | | Video Cable&Camera Power Wire 30m |
| 5 | Vehicle Plate Number Capture Camera | pc | 1 | (Standard) With License plate recognition software |
| | | | | (China Mainland) |
| 6 | Scene Monitoring System (Optional) | set | | |
| | | | | When AC power is not connected to the |
| | Built-in Backup Power (Optional) | set | | state, the equipment can work through the |
| | | | | UPS backup power supply |



AUXILIARY MATERIALS AND ACCESSORIES

| No. | Device Name | Unit | QTY | Brief Introduction | Note |
|-----|--|------|-----|---|-----------------|
| 1 | Data Line (Scanner cable to distribution box) | pc | 1 | 10m Standard | Optional |
| 2 | Data Line (Control box to operation floor) | pc | 1 | 30m (standard) | Optional |
| 3 | Power Wire of distribution box | pc | 1 | 3.5m (standard) | Optional |
| 4 | Power Wire of operation floor | pc | 1 | 3.5m (standard) | Optional |
| 5 | Tubing (Scanner cable to distribution box) | pc | | Dia.50mm Galvanized Pipe | Installer Scope |
| 6 | Construction | | | Cement: about 5 packs | Installer Scope |
| | | | | Sand: 15 packs | |
| | | | | Installation: around 4 worker/ day (For Reference Only) | |





REVROY

Solutions For Controlled Access

CONTACT

Ravi@revroy.com | Info@revroy.Com

+91 080 41302021, +91 080 41571225, +91 9840294082

SALES OFFICE

No.#13, Hamdh Court Building,
Mother Teresa Road, Austin Town,
Bangalore-560 047, India

FACTORY

Plot No 143-B, Bommasandra Industrial Area
Bangalore-560099, Karnataka. India.
+91 80 41658921

“Finest from the very best from around the world”



www.revroy.com